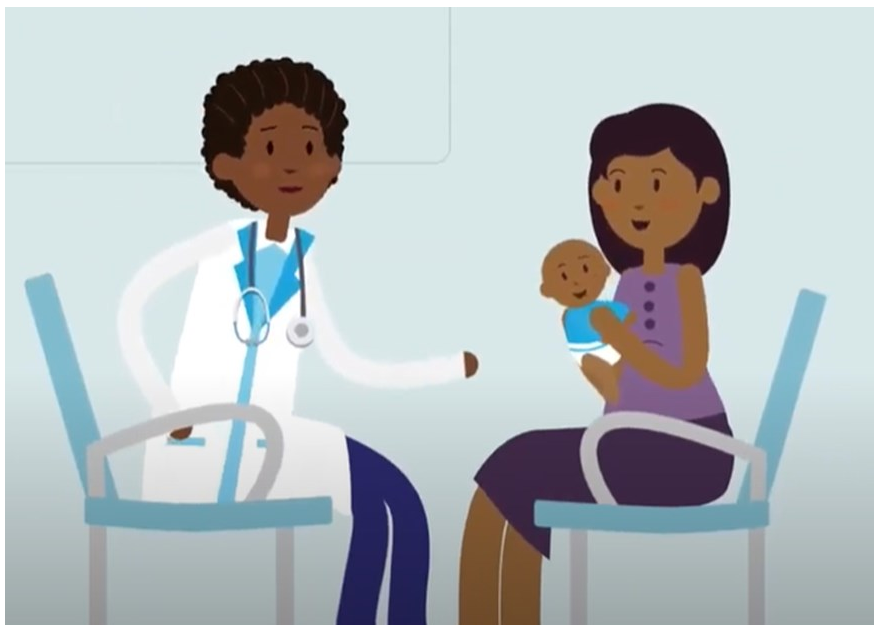


Provider Tip of the Week

April 13, 2022

Parentese

Research shows that babies learn language best through high pitched, sing-song, exaggerated speech. This type of voice – **parentese** – uses real words and appropriate grammar, and may come naturally to many parents. If it does not, try incorporating it in infant visits when you can. And try offering parents a quick explanation on why they should use it too. You can say something like, “This voice may seem silly, but babies like it, and it actually helps them learn more words. It isn’t gaga-gugu, but it does sound a little more like singing and has exaggerated facial expressions.”



Watch this video
for an example

Provider Tips powered by the Keystones of Development curriculum,
login at parenting.mountsinai.org/providers/ to learn more.

© 2019 Mount Sinai Health System. All rights reserved.